

Stainless Steel Profile Wire Solutions Tailored for Your Application



# DIRECTORY

**01** / Company Portfolio.....01

**02** / Qualifications & Certifications.....06

**03** / Products.....07

**04** / Product Application.....19

**05** / Producing Process.....23

**06** / Quality Control.....24

**07** / Packing Method.....25

**08** / Sales Network.....26

# Company Introduction



Tianjin Jingzhou Metal Products Co., Ltd. has been dedicated to producing and selling stainless steel wire since 2009.

With 150 employees, 3 state-of-the-art production facilities covering 18,000 square meters, we have become a trusted partner in the global stainless steel wire industry.

Our independently developed stainless steel profile wire consistently leads the industry, providing critical materials that meet strict specifications for industrial filtration, lifestyle accessories, and high-tech fields

## 2024 International Trade Company Established>>

To better serve our international clients, we have established a branch, Tianjin Jingzhou Metal Products Co., Ltd.

## 2023 Product Line Upgrade>>

Independently developed and produced irregular-shaped wires are widely used in light industry.

## 2017 Product Line Upgrade>>

Independently developed and produced irregular-shaped wires are widely used in light industry.

## 2015 Launch of Profiled wires>>

Mass Production of profiled wire in wedged wire, square wire and semi-circular wire products.

## 2014 Product Line Upgrade>>

Introduction of Profiled (Flat) Wire

## 2013 2nd M&A>>

In 2013, the company acquired Jiangyin Hengyi Steel

## 1st M&A >>

## 2011

In June 2011 the company acquired Tangshan Jingzhou Stainless Steel Products Co., Ltd. and officially changed its name to Tanin Jingzhou Stainless Steel Products Co., Ltd.

## 2009 Founded>>

Tianjin Guangshengxiang Stainless Steel

# Company Development History

# 6

 Establishment Year: 2009

 Number of Production Bases: 3 bases

 Number of Employees: 150 people

 Monthly Production Volume: 1200 - 1500 tons

 Land Area: 18,000 square meters

 New Product R&D Cycle: 7-15 days





# ***Advanced Technical Capabilities***

## **Cutting-Edge Production Equipment**

Automated production lines, including progressive hydrogen retreatment furnaces, active/passive cold rolling mills, and other high-precision machinery.

## **State-of-the-Art R&D Facilities**

Primary and secondary projection instruments, CNC grinding machine tools, and other advanced R&D equipment.

Industry-leading testing instruments such as infrared detectors, pull-mode detectors, and ultrasonic detectors.

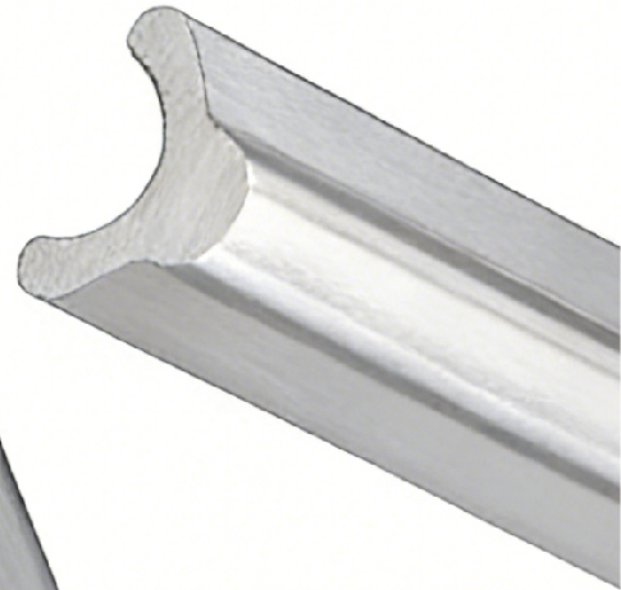
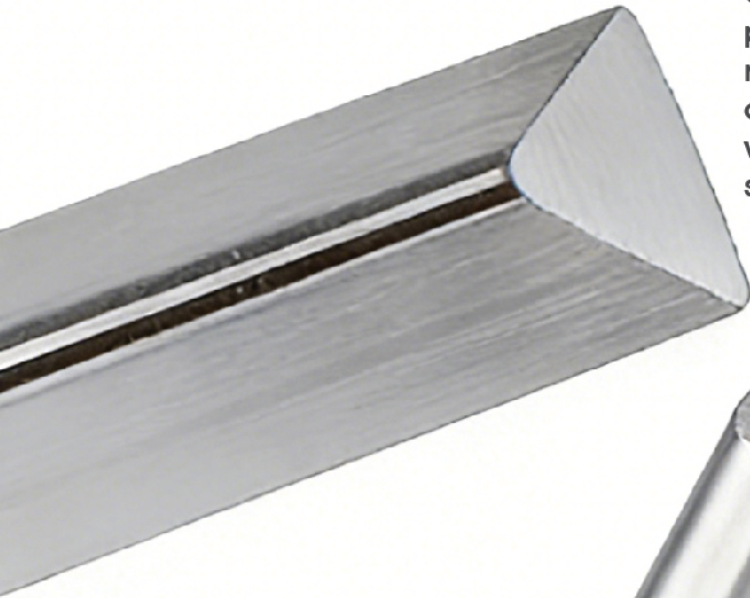


## **Highly Skilled Technical Team**

Composed of members with advanced degrees, strong industry acumen, and exceptional R&D and design capabilities.

# *OEM/ODM*

Customize your CAD designs with us for precise product fit. Our advanced manufacturing ensures top-quality, durable, and corrosion-resistant stainless steel profile wires. Partner with us for tech-driven, tailored solutions.



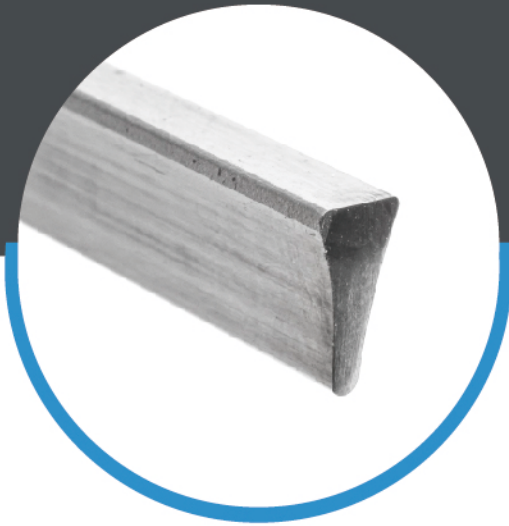
Certified to ISO 9001 and honored as a multi - awarded Chinese High - Tech Enterprise, we are committed to delivering products and services of uncompromising quality.



## Qualifications & Certifications

High - Tech Enterprise

# STAINLESS STEEL SHAPED WIRE



## Stainless Steel Triangle Wire



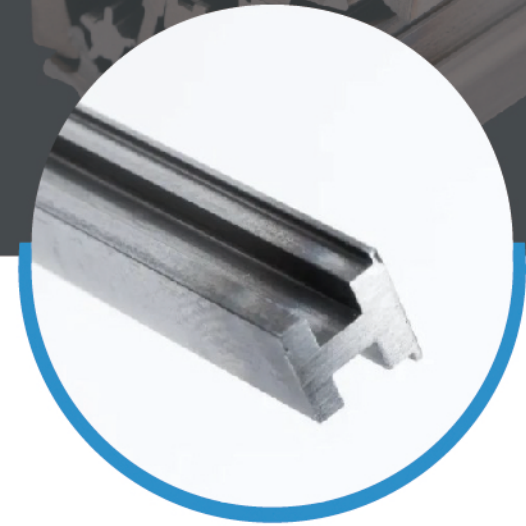
Triangle wire is suitable for a variety of industrial filtration and separation applications.



## Stainless Steel Profile Wire



Profile wire is ideal for engineering and construction projects that require high precision and strength.



## Stainless Steel H Type Wire

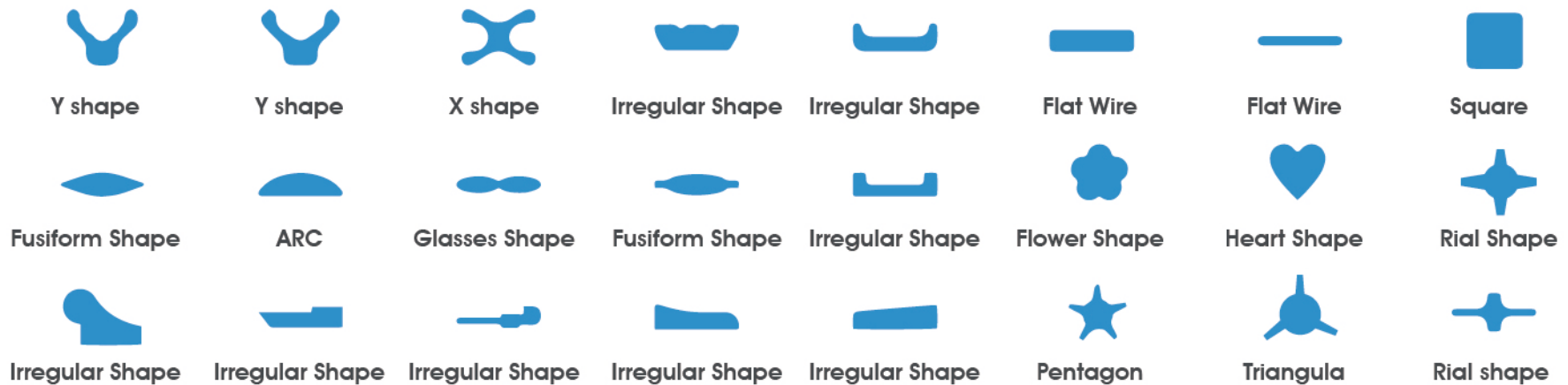
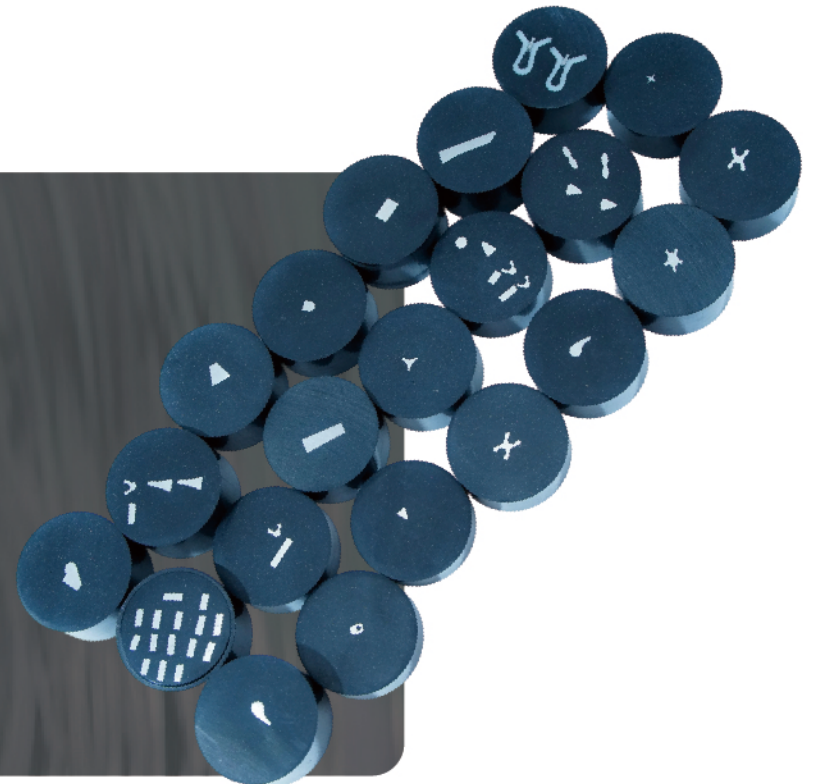


H type wire provides superior support and structural stability, making it suitable for architectural and industrial design applications.

# Stainless Steel Shaped Wire

Jingzhou Metal Products specializes in the production of high-standard shaped wires and rolled profile wires. We offer round, square, flat, and custom complex-shaped wires to meet specific customer needs.

Our manufacturing capabilities span multiple fields requiring high precision, from industrial filtration and lifestyle accessories to high-tech sectors, providing critical materials that meet strict specifications. Our professional experience and commitment to quality support your industrial solutions.



# Stainless Steel Shaped Wire

Jingzhou Metal Products, empowered by its own R&D team and advanced mold development equipment, is proficient in customizing uniquely shaped wires to meet your specific needs.

Our commitment to quality control at every stage guarantees that each customized wire product adheres to the highest industry standards, making us the trusted choice for businesses seeking precision - engineered metal solutions.

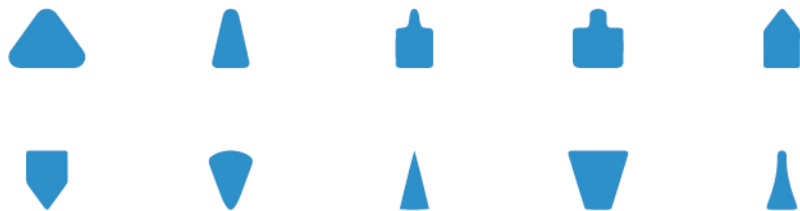


Profile	Max size		Min size	
	mm	inch	mm	inch
Flat round edge	10x2	10.394x0.079	1x0.25	0.039x0.01
Flat square edge	10x2	0.394x0.079	1x0.25	0.039x0.01
T-section	12x5	0.472x0.197	2x1	0.079x0.039
D-section	12x5	0.472x0.197	2x1	0.079x0.039
Half round	10x5	0.394x0.197	0.06x0.03	0.0024x0.001
Oval	10x5	0.394x0.197	0.06x0.03	0.0024x0.001
Triangle	12x5	0.472x0.197	2x1	0.079x0.039
Wedge	12x5	0.472x0.197	2x1	0.079x0.039
Square	7x7	0.276x0.276	0.05x0.05	0.002x0.002

# Stainless Steel Wedge Wire

Wedge wire also known as V-shaped wire, is a type of wire that has a V-shaped cross-section. This shape provides the wire with unique properties that make it suitable for various applications. It is often used in filtration systems.

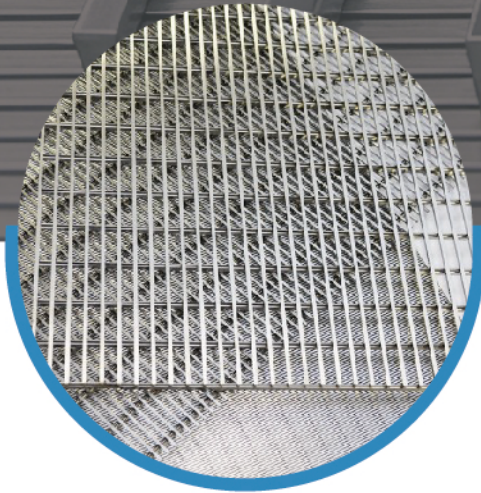
Wedge wire can be custom-made to meet specific requirements. This includes special sizes, shapes, and materials to fit particular applications or performance needs.



Material	SS304 SS316 SS316L SS321 809C E300
Specification	0.5*1.0mm~5.0*10.0mm
Dimensions Tolerance	±0.01mm
Production Capacity	1200 Tons/Month
Package	Wooden spool/Steel spool
Shape	As required



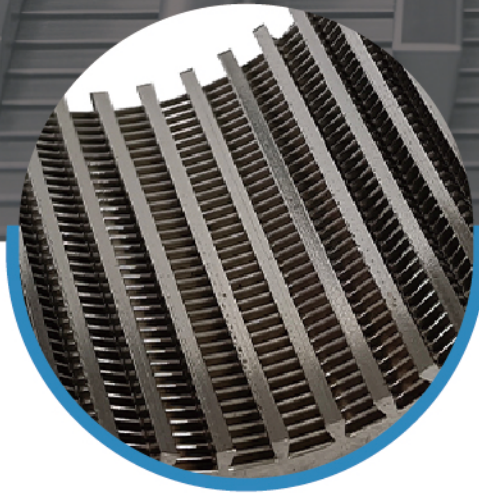
# WEDGE WIRE SCREEN



## Wedge Wire Flat Screen



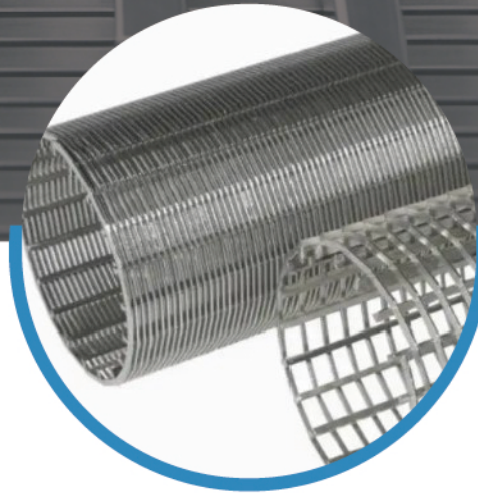
A flat surface screen made of V-shaped wires welded to support rods, used for precise filtration and separation.



## Curve Screen



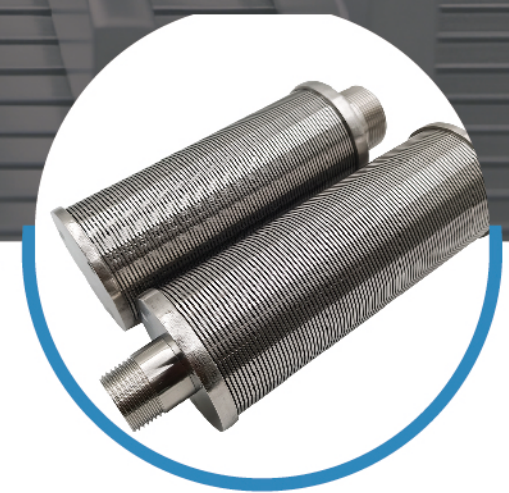
Wedge wire curve screen is a curved, clog-resistant filtration panel designed for efficient solid-liquid separation in continuous flow systems.



## Wedge Wire Tube



A cylindrical V-wire screen with support rods, ideal for continuous flow filtration.



## Nozzle Tube

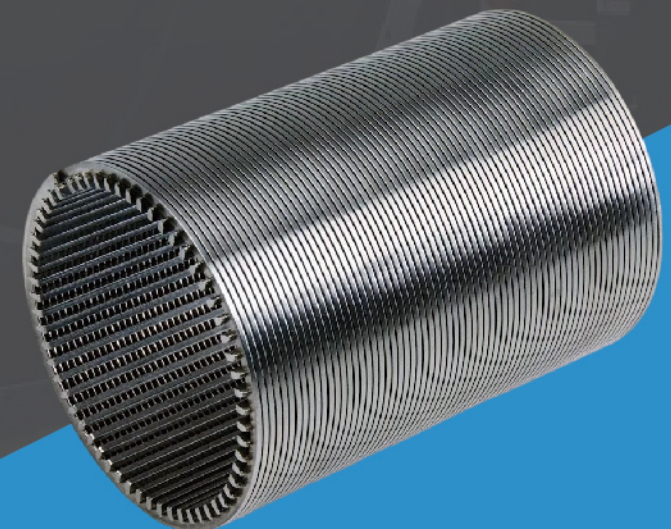
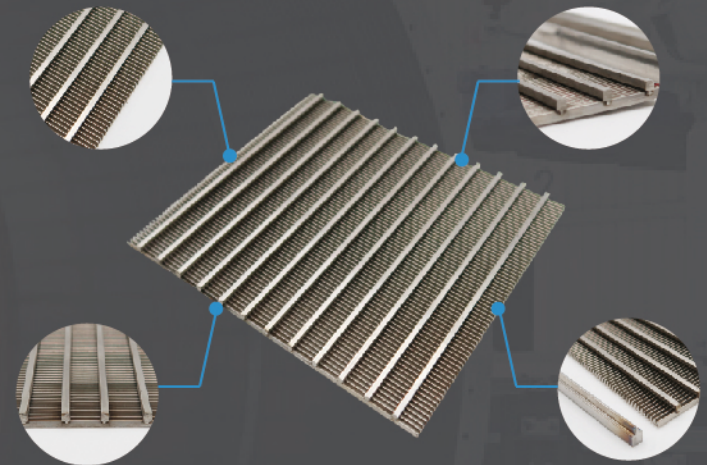


Nozzle wedge wire filter used for precise liquid-solid separation in water and industrial filtration systems.

# Wedge Wire Screen/Tube

Wedge wire screen (V wire) features a V-shaped surface and triangular profile, providing high strength, precision, and clog-resistant filtration—ideal for water treatment, petrochemical, and food processing.

Wedge wire screen screen	
Material	SS304,SS316,SS304L,SS316L etc.
Wedge Wire(mm)	1.50 1.80 2.30 3.00 3.30 3.70
Profile Wire (mm)	2.20 2.50 2.70 3.60 4.30 4.70 5.60 6.30 7.00
Support Rod(mm)	2.30 3.00 3.30 3.70
Support Wire (mm)	Height : 2.70 3.60 4.70 5.60 6.30 Round : 2.50mm -- 6.0mm
Slot Opening Size (mm)	0.02mm - 5mm
Length(mm)	Lengths up to 6 meters or customized as your request
Width(mm)	25mm - 1200 mm or customized as your request
Note: Other specifications can be customized according to your requirement	



# ***Y/X TYPE ZIPPER WIRE***



## **X Zipper Shaped Stop wire**

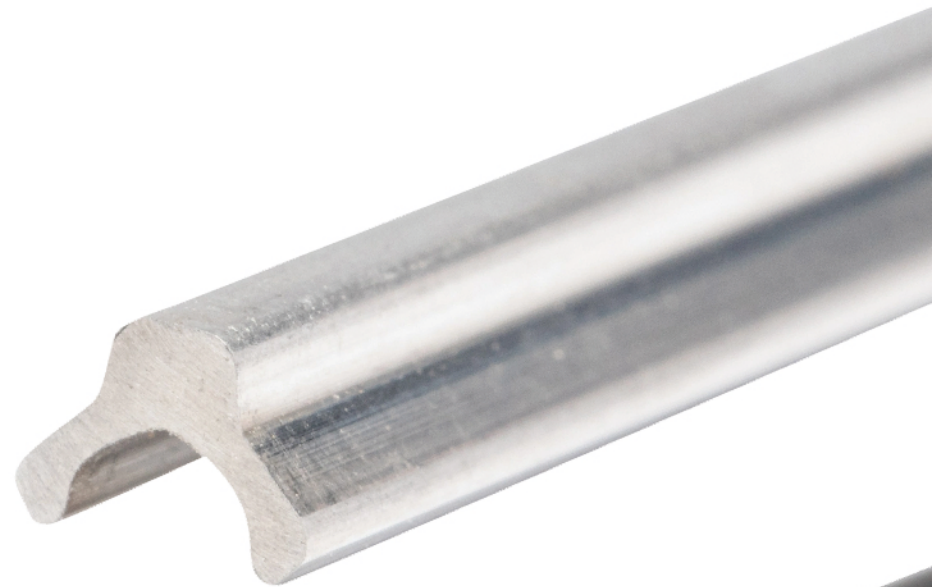
An X-shaped interlocking bottom stop designed for zippers, providing precise alignment and secure closure at the base.

## **Y-Shaped Zipper Wire**

Durable Y-shaped zipper wire for strong fastening, smooth operation, and long-lasting performance.

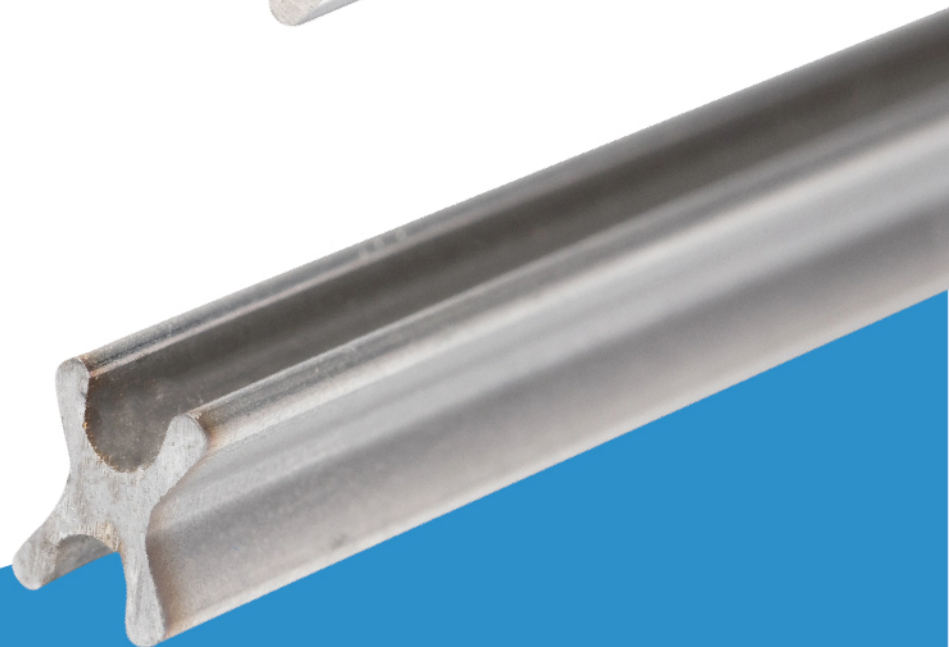
## Y-Shaped Zipper Wire

Durable Y-shaped zipper wire for strong fastening, smooth operation, and long-lasting performance.



## X Zipper Shaped Stop wire

An X-shaped interlocking bottom stop designed for zippers, providing precise alignment and secure closure at the base.



# Y Shaped Teeth Zipper Wire

Model: #3 #4 #5

Material: SS304 SS430 Non-magnetic E300

E300 is specially developed for clothing zipper accessories, and it has the properties of non-magnetic wear resistance.

Y Shaped Teeth Zipper Wire						
	SS304		SS430		E300	
3#Y	3.65-3.70	2.63-2.66	3.65-3.70	2.63-2.66	3.65-3.70	2.63-2.66
4#Y	3.76-3.80	3.10-3.13	3.76-3.80	3.10-3.13	3.76-3.80	3.10-3.13
5#Y	4.82-4.88	3.50-3.56	4.82-4.88	3.50-3.56	4.82-4.88	3.50-3.56



# X Zipper Shaped Stop wire

Model: #3 #4 #5

Material: SS304 Non-magnetic E200 Non-magnetic E300

X or H stops are ideal and metal zip fasteners, offering symmetrical front-and-back fixation that suits the raised teeth design for both function and appearance.

X Zipper Shaped Stop Wire			
	SS304	E200	E300
3#Y	5.17×3.17	5.17×3.17	5.17×3.17
4#Y	5.77×4.34	5.77×4.34	5.77×4.34
5#Y	6.30×4.61	6.30×4.61	6.30×4.61



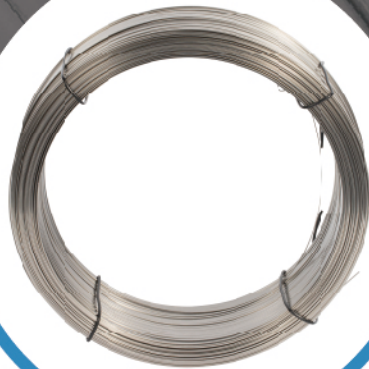
# OTHER PRODUCTS



## Steel Round Wire



Steel round wire is widely used in manufacturing springs, fasteners, wire meshes, and welding materials due to its excellent strength, flexibility, and versatility.



## Steel Flat Wire



Steel flat wire is commonly used in applications such as springs, clips, automotive components, and industrial fasteners due to its strength and formability.



## Titanium Wire



Titanium wire is valued for its high strength-to-weight ratio, corrosion resistance, and biocompatibility, making it ideal for aerospace, medical, and industrial applications.



## Welding Wire



Welding wire is a critical consumable used in various welding processes to fuse metal parts, offering strong bonding, stable arc performance, and reliable mechanical properties.

# Titanium Wire

Titanium wire is known for its excellent corrosion resistance, high strength-to-weight ratio, and outstanding biocompatibility. Titanium wires are categorized into types like pure titanium wire, alloy wire, straight wire, welding wire, hanging wire, coil wire, bright wire, medical wire, and titanium nickel alloy wire based on properties and requirements.



Grade					
GB Standard:TA1 TA2 TA3 TA4 TA9 TA10 TA11 TC4 TC6 TC11					
ANSI Standard:GR1 GR2 GR3 GR4 GR5 GR7 GR9 GR12					
Specification					
A. Titanium wire:p0.8-6.0mm					
B. Eyeglass titanium wire:Dedicated φ1.0-p6.0mm titanium wire for eyewear					
C. Titanium wire specifications:p0.2-p8.0mm for hanging fixtures and fittings					
Diameter	Tolerance	Diameter	Tolerance	Diameter	Tolerance
0.1~0.2	-0.025	>0.2~0.5	-0.04	>0.5~1.0	-0.06
>1.0~2.0	-0.08	>2.0~4.0	-0.1	>4.0~7.0	-0.14
Execution Standard					
GB/T3623-98 ASTM B863 ASTM F136					

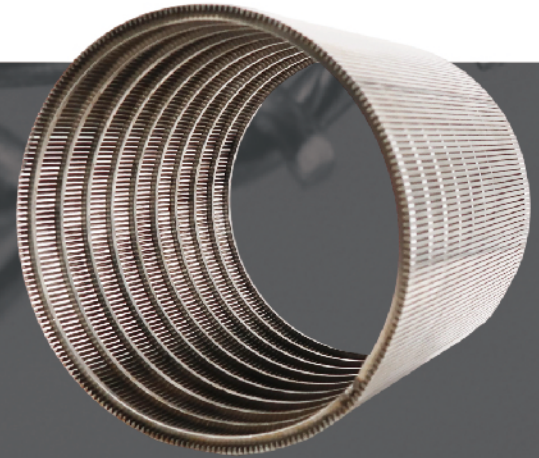
## Product Application

With its core advantages of corrosion resistance, high strength, and easy processing, its application spans various fields such as industrial manufacturing, architectural decoration, medical equipment, kitchen and bathroom appliances, and more: in mechanical equipment, it serves as the core framework for precision components; in architectural curtain walls, it transforms into an exquisite decorative line, outlining aesthetic contours; in medical equipment, it becomes a reliable substrate for implantable accessories with precise dimensions; in kitchen and bathroom appliances, it supports the durable structure of filters and brackets.

From industrial hardware scenes to delicate household products, stainless steel profile wires, with their flexible forms, adapt to diverse needs and have become the preferred material for quality improvement and upgrading in various industries



# Heavy Industrial Application



Water Treatment



Oil and Gas



Beer and Beverage Filter



Mining Screen

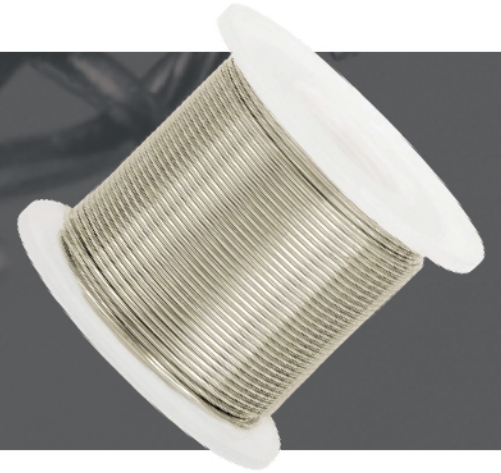


Powder Screen Filter



Paper and Pulp Filter

# Light Industrial Application



Y Clothing Zipper Wire



Mesh



Headphone Parts



Eyewear Parts



Watch Parts

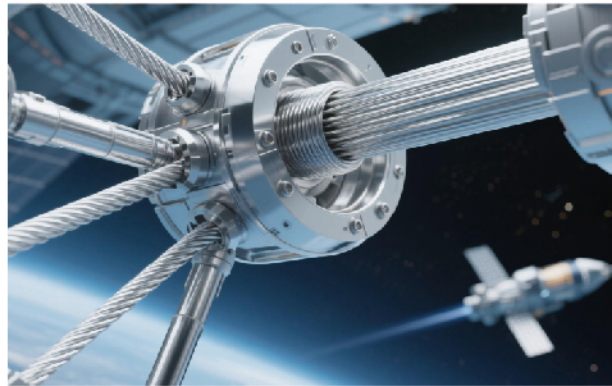


Jewelry

# Other Application



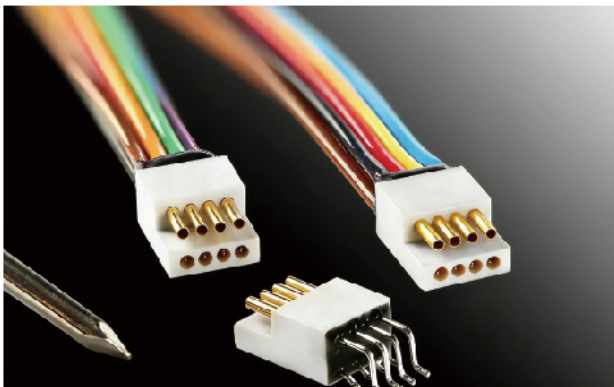
Medical Devices



Aerospace



Orthodontics



Electronics Parts



Welding



Spring Steel Wire

Wire Rod



Cold Drawn Round Wire



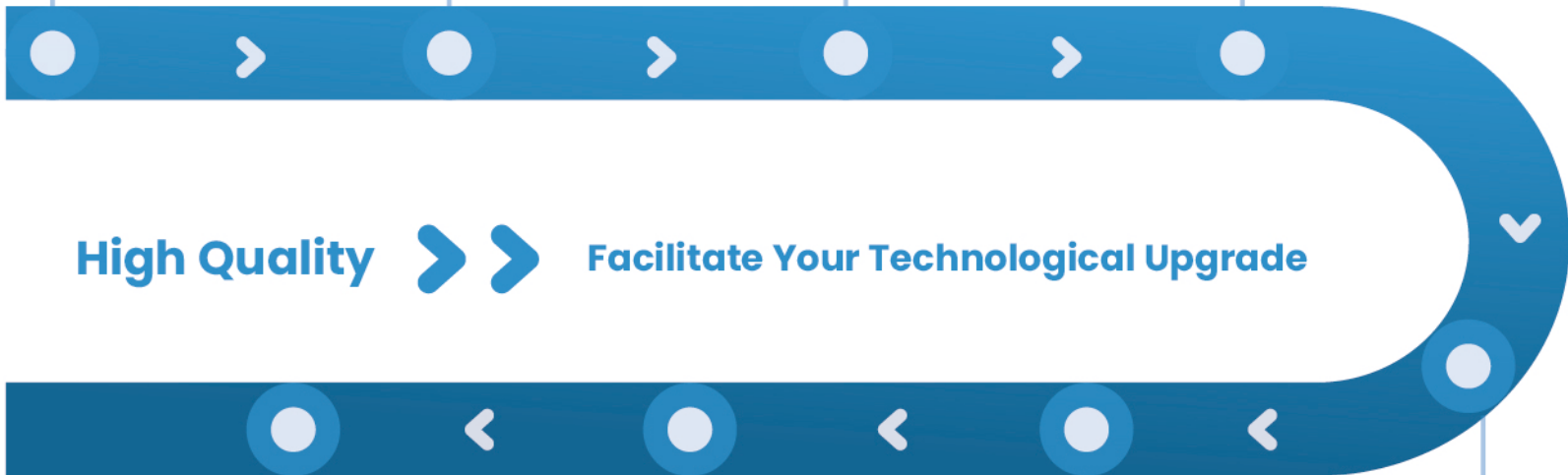
Round Wire Annealing



Shaped Rolling



**Producing Process**



Delivery



Packaging



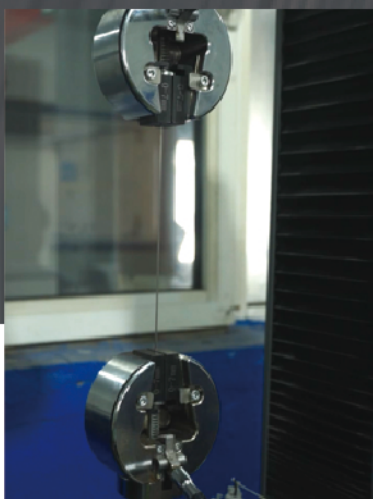
Fine Drawing



Annealing

# Quality Control

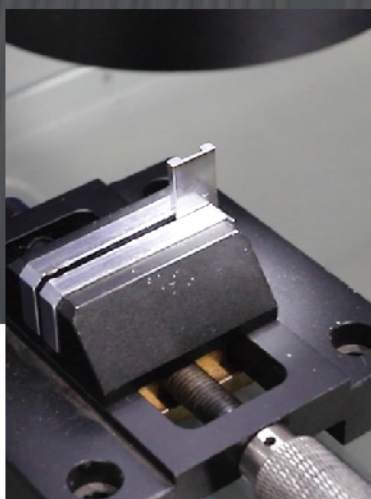
Dual inspection is ensured through infrared equipment and manual checks to guarantee accuracy and reliability.



## Tensile Test



Tensile strength indicates the maximum stress a material can withstand while being stretched before breaking, making it crucial for assessing structural integrity and material performance.



## Dimensional Inspection



Measuring wire dimensions ensures precision, consistency, and compatibility with application requirements, which is essential for quality control and product performance.



## Infrared Detector



The infrared detector ensures minimal runout tolerance throughout an entire coil of wire by providing precise, real-time monitoring during production.



## Mold Repair



Mold repair involves restoring damaged or worn molds to their original specifications to maintain product quality, extend mold life, and reduce production downtime.

# PACKAGING METHOD



**Iron Spool**



**Wooden Spool**



**Coils on Pallet**



**Cardboard Drum**



**Straight Bar**



**Plastic Spool**



**Cardboard Tube**



**Soft Packaging**

## Sales Network



Across the globe, quality prevails. JINGZHOU METAL, a multi - awarded Chinese high - tech enterprise with ISO 9001 certification. Our reach spans six continents, from North America to Australia, Europe to Africa. We bring advanced technology, top - notch products and services worldwide, meeting diverse global demands with unwavering commitment.

# Contact Us

+86 15320163118  
[www.jingzhoumetal.com](http://www.jingzhoumetal.com)

[jing@jingzhoumetal.com](mailto:jing@jingzhoumetal.com)  
12th Floor, Block C, Junlong Plaza, Heping, Tianjin